

GREEN × EXPO 2027 YOKOHAMA JAPAN



19 MAR. 2027 [FRI] ▶▶ 26 SEP. 2027 [SUN] Yokohama (Kamiseya)

Living in harmony with the environment, creating together with everyone.

That is the premise of **GREEN×EXPO 2027!**

Not just an event about plants and flowers, but also a chance to consider how to live in harmony with the Earth

In addition to a breathtaking landscape of flowers and greenery, GREEN×EXPO 2027 will provide places and opportunities for people to interact with objects and ideas, and to consider a future in which we live in harmony with the Earth.

Everyone is free to participate in their own way

GREEN×EXPO 2027 will feature a variety of content that visitors can participate in and experience in their own way.

A place to demonstrate the importance of a sustainable society
Taking Steps to Solve the Problems Faced by the Planet!

Held in Yokohama (Kamiseya), a symbol of friendship and peace

Held on a site that was returned by the US military in 2015, GREEN×EXPO 2027 in Yokohama (Kamiseya) will share a vision for future society in a landscape abounding in nature.

The Limits of the Global Environment (Planetary Boundaries)

The critical environmental limits sustainably survive on Earth are current trends continue, abnormal extreme heat in the summer and destruction of ecosystems, will of living until we reach a point of no

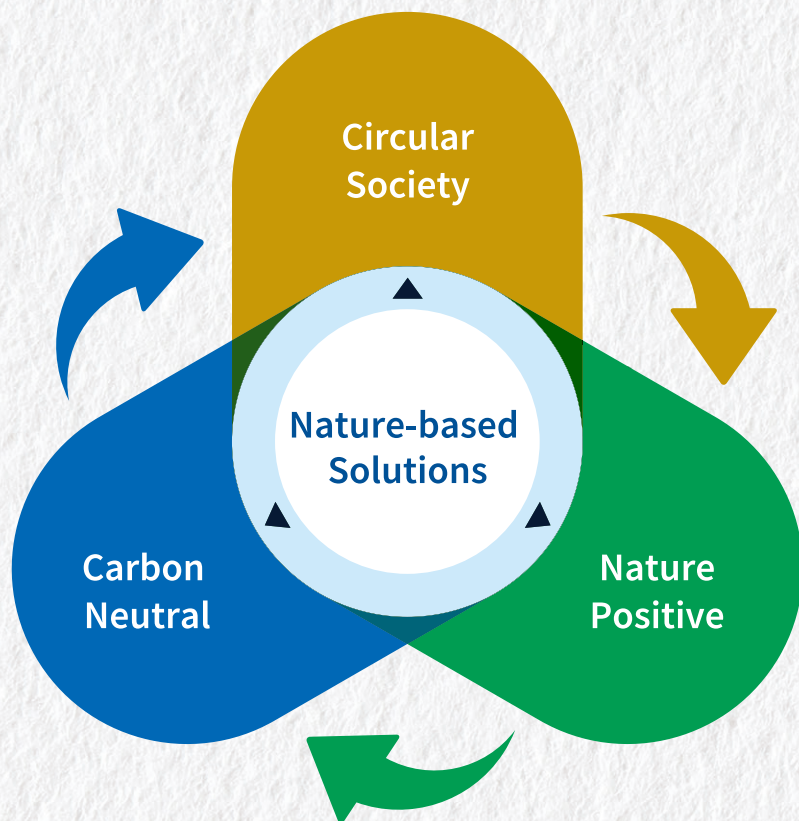
within which humans can known as planetary boundaries. If weather conditions, such as heavy rain disasters, as well as the begin to jeopardise our entire way return.

After the event, the expo site will become a park for protecting people's lives, based on the themes of the environment and disaster prevention

Once GREEN×EXPO 2027 is over, the expo site will be transformed into a new park and opened to the public. The area will be reborn as a place for protecting people's lives, based on the themes of the environment and disaster prevention.

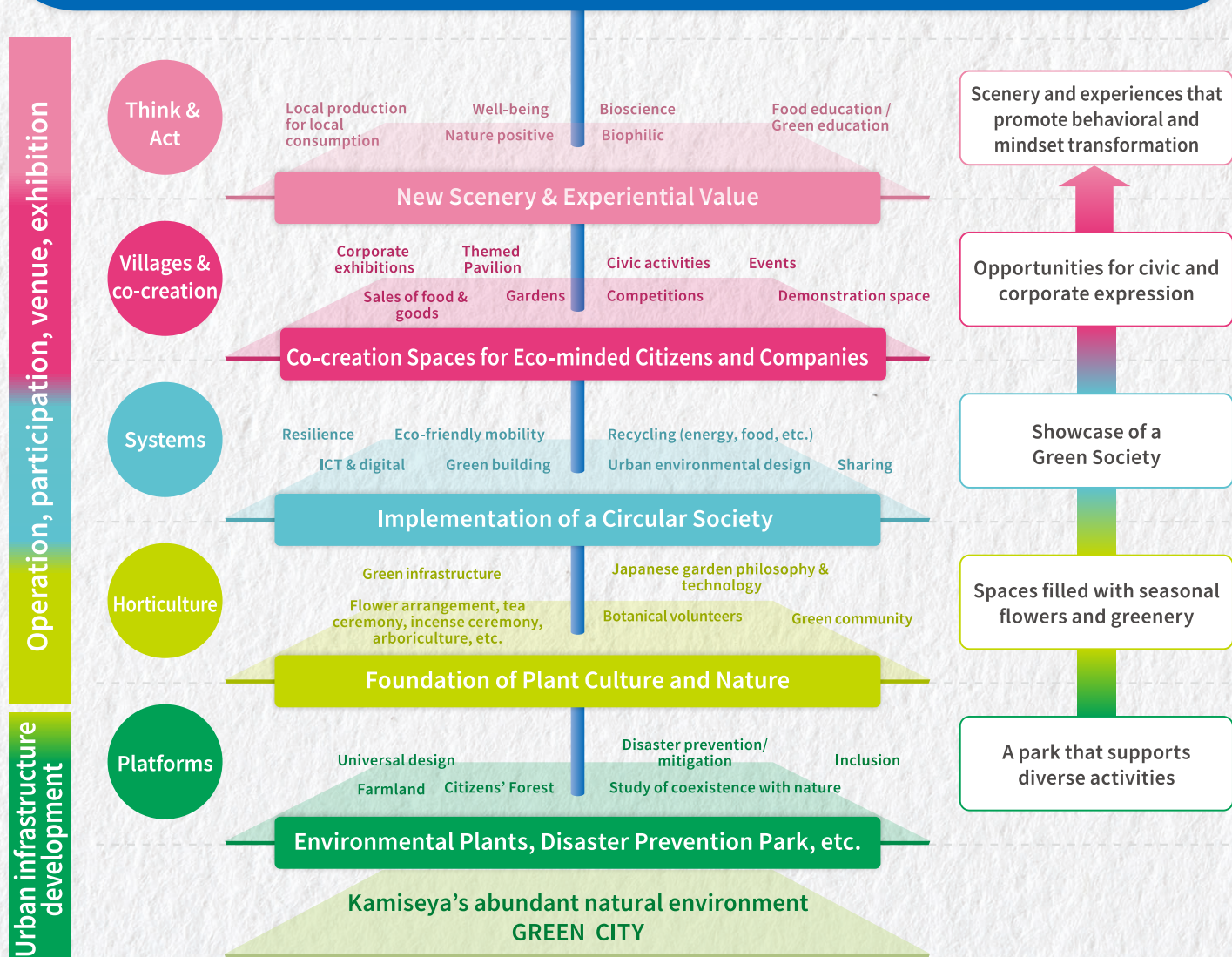


OPEN!



Climate change and biodiversity loss. GREEN×EXPO 2027 will work with people around the world to create concrete actions to solve global problems.

Scenery of the Future for Happiness





Official Mascot
Tunku Tunku

Prepare to Live in Harmony with the Earth



Encounter cutting-edge technologies that will help realise a green society

Urban GX Village



A showcase of traditional Japanese craftsmanship that has been nurtured in harmony with nature

Craft Village



Pursuing well-being through agriculture and food

Farm & Food Village



A place where children can enjoy learning about nature and the world that they will inherit

Kids Village



Rediscover the comfort of living in harmony with nature

SATOYAMA Village



A collection of technologies that will aid in building a sustainable green society.



Grow with nature while feeling the warmth of the soil.



A unique nighttime experience created by the coolness and illuminations.



A large collection of flowers, greenery, food, culture, and technology from around the world. Enjoy global exchanges in a festive atmosphere.



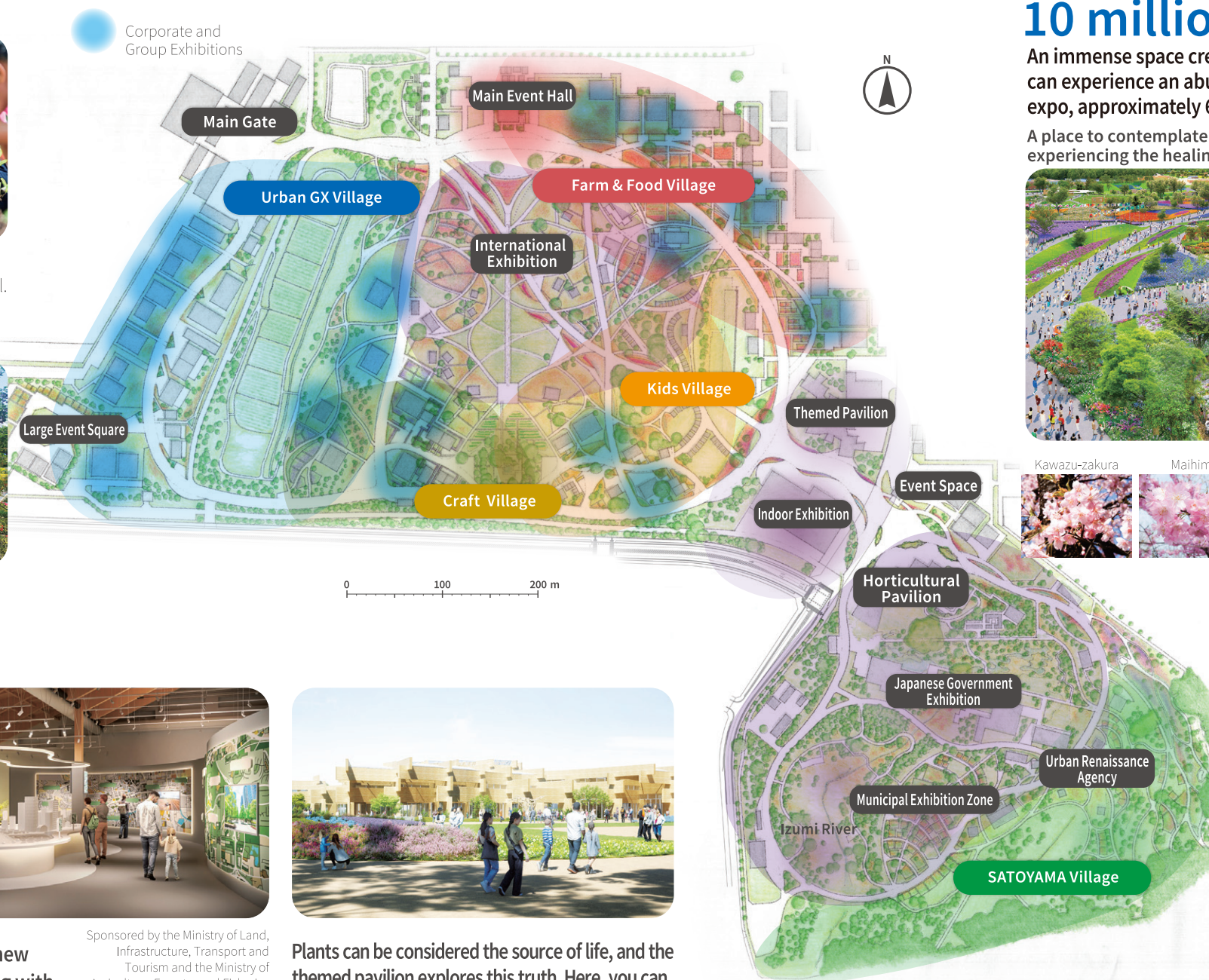
At the Japanese Government Exhibition, you can experience new technologies for solving global environmental problems, along with the highest standard of Japanese gardens, Ikebana, and Bonsai.



Sponsored by the Ministry of Land, Infrastructure, Transport and Tourism and the Ministry of Agriculture, Forestry and Fisheries



Plants can be considered the source of life, and the themed pavilion explores this truth. Here, you can learn how to live as part of the global environment through both real-world and digital experiences.



10 million plants and flowers

An immense space created using plants and flowers from all seasons, in which you can experience an abundance of nature and biodiversity. At the beginning of the expo, approximately 600 cherry trees of 40 different varieties will be in full bloom.

A place to contemplate the future of the global environment while simultaneously experiencing the healing power of flowers and greenery.



© The Flower Association of Japan (public interest incorporated foundation)

Start The different flowers that will bloom during the 6-month duration of the expo End



The traditional Japanese calendar features 24 seasonal divisions that are further divided into 72 micro-seasons. These will all be taken into account, and the subtle changes of the seasons will be expressed in the landscape.



At the Flowers and Greenery Exhibition, Japan's top florists and horticulturists will compete based on aesthetics and technique, and visitors will be able to enjoy flowers and gardens in each season.

GREEN EXPO

Key points
of the expo
experience

Everyone is free to participate in their own way

We hope that people's enjoyment of the unique scenery and experiences at GREEN×EXPO 2027 will inspire thinking and actions that lead to the realisation of a green society and living in harmony with nature.



Discover the importance of nature and plants, and the importance of living in harmony with the planet. An astonishing array of memorable experiences awaits.



Experiences featuring plants and future technologies will give visitors an idea of the green society that we are aiming for.



Whether it's eating or playing, every experience at the expo will lead to deeper insights and understanding.



Through immersive images and the scent of plants, visitors will be able to intuitively experience what we need to live in harmony with the Earth, and how we should live our lives.



Discover the opportunity to consider and realise a future for every one of us, living in harmony with the environment.



Official mascot: Tunku Tunku

Profile

Tunku Tunku is a curious spirit who has come to Earth from the far reaches of the galaxy, captivated by its inherent beauty. Tunku Tunku resonates with the feelings of all living things, especially plants, and communicates their emotions to humans.

When the Earth is healthy, Tunku Tunku dances and makes flowers bloom with happiness. When the Earth is polluted, Tunku Tunku becomes sad and loses energy. Witnessing how this planet faces numerous challenges like environmental destruction and pollution, Tunku Tunku has made a vow to connect humans with nature.

Scan to learn more
about Tunku Tunku!



Official ambassador: Mana Ashida

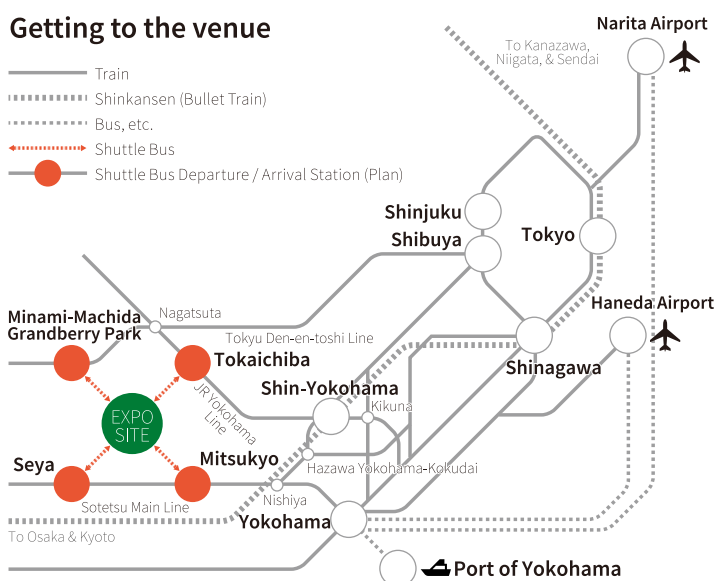
The International Horticultural Expo will bring together people from different countries, industries, and generations to think about the full potential of the power of plants and nature for the global environment, and to show the world the most advanced technology and beauty. I also feel that through the expo, our understanding of the immeasurable vitality and potential of plants and the notion that all life is connected, with plants at the heart, will lead us to the main theme, “Scenery of the Future for Happiness”.

As an ambassador, I will also strive to enjoy learning together with all of you and will convey the charm of GREEN×EXPO 2027 to help as many people as possible envision a future full of hope.



Information

Getting to the venue



Organiser

Japan Association for the International
Horticultural Expo 2027, Yokohama
(GREEN×EXPO Association)

Site

The Former Kamiseya Communications Facility
(Seya and Asahi wards, Yokohama)

Expo area

Approximately 100 hectares
(80 hectares for the main event area)

For more information,
visit the official
website

